

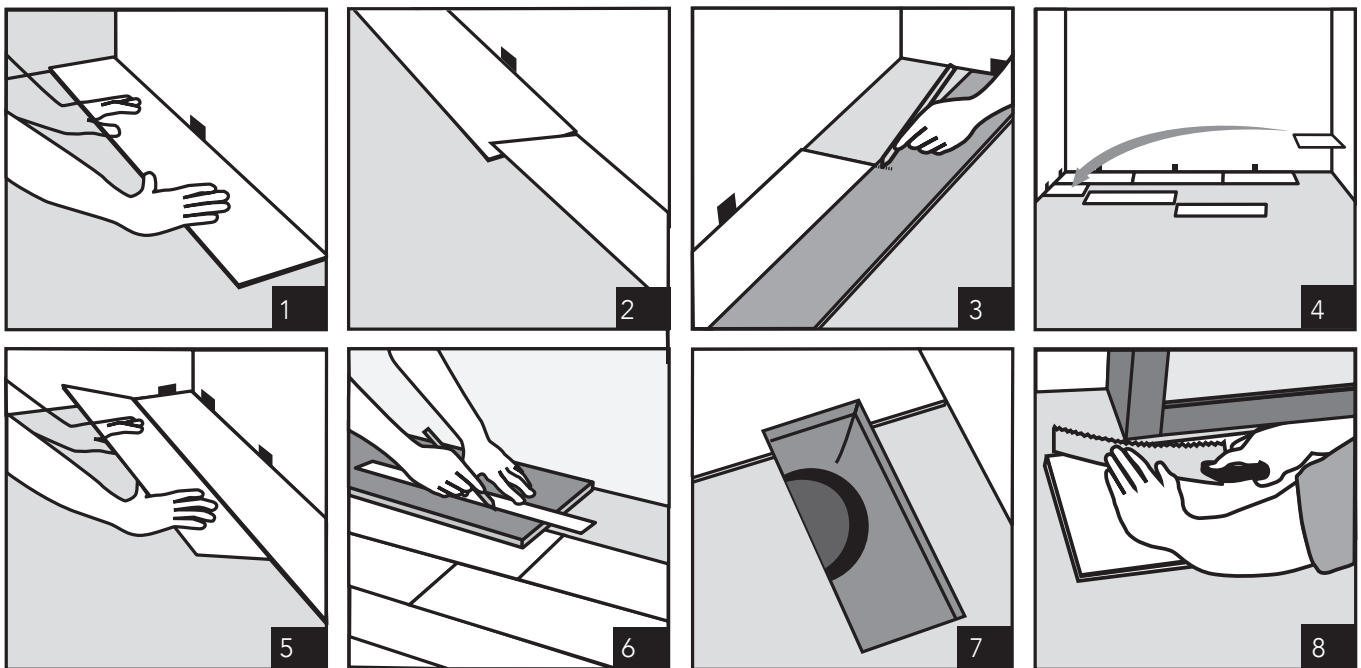
Features	Test Method	Our Value
Size		12.2" W x 24.21" H (310 mm W x 615 mm H)
Thickness		0.19" (4.7 mm)
Wear Layer		20 mil (0.5 mm)
Dimensional Stability and Curling after Exposure to Low Temperatures	EN ISO 23999:2012	Change of -0.02% in manufacturing direction and -0.03% across manufacturing direction when exposed to -22°F (-30°C)
IIC	ASTM E492-09	IIC 71
Static Load Resistance	ASTM F970-17	Average 0.12 mm residual indentation
Average Critical Radiant Flux	ASTM E648	1.06 Watts/Square Cm
Average Maximum Smoke Density (Flaming)	ASTM E662	272
Average Maximum Smoke Density (Non-Flaming)	ASTM E662	96

Product Info:

- SPC Vinyl Tile
- Beveled Edge
- Attached 1.5mm High-Density Foam Underlay
- 4.7 mm / 20 mil (.05 mm) Wear Layer
- 40 Years Guarantee: For Residential
- 30 Years Guarantee: For Light/Moderate Commercial Uses
- Check Decor 24 for Stock


www.genrose.com

QUICKCLICK PRODUCT INSTALLATION INSTRUCTIONS DIAGRAMS



QUICKCLICK PRODUCT INSTALLATION INSTRUCTIONS

SUITABLE SURFACES

Lightly textured or porous surfaces. Well-bonded, solid floors. Dry, clean, well-cured concrete (cured for at least 60 days prior). Wood floors with plywood on top. Ceramic or porcelain tiles with grout lines filled with floor leveler. All surfaces must be clean and dust free.

UNSUITABLE SURFACES

Rough, uneven surfaces including carpet and underlay. Rough, heavily textured and/or uneven surfaces may telegraph through the vinyl and distort the finished surface. Do not install this product in areas which are exposed to long term direct sunlight such as sun rooms or solariums.

WARNING: DO NOT REMOVE OLD RESILIENT FLOORING. THESE PRODUCTS MAY CONTAIN EITHER ASBESTOS FIBERS OR CRYSTALLINE SILICA, WHICH CAN BE HARMFUL TO YOUR HEALTH.

RADIANT HEATED FLOORS

Can be installed over hydronic radiant heated floors or electric radiant heated floors that use embedded cables under the subfloor. **DO NOT INSTALL** over any electric heating mat that is installed on top of the subfloor. Do not turn heat above 29°C (85°F). To avoid overheating, the use of an in-floor temperature sensor is recommended.

PREPARATION

The vinyl tiles should be allowed to acclimatize to room temperature (approx 20°C/68°F). Carefully check tiles for any defects before installation. Any tile that has been installed will be deemed acceptable to the installer. Check that all ITEM NUMBERS are the same and that you have purchased sufficient material to complete the job. Remove any traces of glue or residue from the previous flooring.

New concrete floors need to dry out for at least 60 days prior to installation. Wood tile floors require a plywood subfloor. All nail heads must be driven down below the surface. Securely nail all loose boards. Scrape, plane or fill uneven boards, holes or cracks using floor-leveling compound if sub-floor is uneven – over 3.2 mm (1/8”) within a span of 1.2 m (4’). If installing over existing tile, use a floor levelling compound to skim coat grout lines. Make sure the floor is smooth, clean, and free of wax, grease, oil or dust, and sealed as necessary before laying tiles.

TOOLS AND SUPPLIES

Saw, tapping block, rubber mallet, spacers, pencil, tape measure, ruler and safety goggles.

INSTALLATION

Start in a corner by placing the first tile with the tongue side facing the wall. Use spacers around the perimeter of the room, as well as against any fixed objects, to maintain a minimum 8 mm (5/16”) expansion space for rooms up to 12.2 m (40’) in either direction and a minimum 12 mm (1/2”) expansion space for rooms up to 30 m (100’) in either direction. The expansion space accounts for the normal movement of the floor. A T-Molding must be used for commercial spaces measuring greater than 30 m (100’) in either direction. If the flooring is installed in an area falling outside the normal room temperature range, a T-Molding is required every 7.62 m (25’).

Diagram 1.

NOTE: THIS SPACING MUST ALSO BE MAINTAINED BETWEEN THE FLOOR AND ALL VERTICAL SURFACES, INCLUDING CABINETS, POSTS, PARTITIONS, DOOR JAMBS AND DOOR TRACKS. YOU WILL ALSO NEED TO USE TRANSITION STRIPS IN DOORWAYS AND BETWEEN ROOMS. FAILURE TO DO SO MAY CAUSE BUCKLING OR GAPPING.

To attach your second tile, lower and lock the end tongue of the second tile into the end groove of the first tile. Line up edges carefully to ensure a close and tight fit. Using a rubber mallet, lightly tap the top of the end joints where the first and second tiles lock together. The tiles should lay flat to the floor. **Diagram 2.**

WARNING: FAILURE TO PROPERLY LINE UP THE END JOINT AND ATTEMPTING TO FORCE IT IN WHILE OUT OF ALIGNMENT COULD RESULT IN PERMANENT DAMAGE TO THE END JOINT.

Repeat this procedure for each subsequent tile in the first row. Continue connecting the first row until you reach the last full tile.

Fit the last tile by rotating the tile 180° with the pattern side upward and placing it beside the first row of tiles with its end up against the far wall. Line a ruler up across the end of the last full tile and across this new tile. Draw a line across the new tile with a pencil and cut with a saw. **Diagram 3.**

Rotate the tile 180° so that it is back to its original orientation. Lower and lock its end tongue into the end groove of the last full tile. Lightly tap the top of the end joints with a rubber mallet until the tiles are flat on the floor.

You will begin the next row with the off-cut piece from the previous row to stagger the pattern. Pieces should be a minimum of 200 mm (8”) long and joint offset should be at least 400 mm (16”). Cut pieces should be no less than 76.2 mm (3”) in width. Adjust layout for a balanced look. **Diagram 4.**

To start your second row, tilt and push the new tile's side tongue into the side groove

of the very first tile. When lowered, the tile will click into place. Using a tapping block and rubber mallet, lightly tap the long side of the new tile to lock it with the tiles of the first row. The tiles should lay flat to the floor. **Diagram 5.**

Attach the second tile of the new row first on the long side. Tilt and push tile into place, making sure edges are lined up. Lower tile to the floor. Using a tapping block and rubber mallet, lightly tap the long side of the new tile to lock it into place. Next, lightly tap down on the top of the end joints with a rubber mallet to lock them together. Continue laying remaining tiles in this manner.

To fit the last row, lay a tile on top of the previous row with its the tongue to the wall. Lay a ruler across the tile so that it is lined up with the side of the tiles of the previous row and draw a line across the new tile with a pencil. Don't forget to allow room for spacers. Cut the tile with a saw and attach into position. **Diagram 6.**

Door frames and heating vents also require expansion room. First cut the tile to the correct length. Then place the cut tile next to its actual position and use a ruler to measure the areas to be cut out and mark them. Cut out the marked points allowing the necessary expansion distance on each side. **Diagram 7.**

You can trim for door frames by turning a tile upside down and using a handsaw to cut away the necessary height so that tiles slide easily under the frames.

Diagram 8.

Remove the spacers once the floor is completely installed.

DISASSEMBLY

To disassemble the floor, tilt an entire row up and disconnect it from the previous row. Then disconnect each tile by sliding it out horizontally.

CARE AND MAINTENANCE

Avoid exposure to direct sunlight for prolonged periods of time. Use drapes or blinds to minimize direct sunlight during peak sunlight hours.

Do not expose this floor to temperatures below -20°F or above 150°F (below -20°C or above 65.5°C).

Water leakage over or around the outer edges of the flooring can damage a wood subfloor, so clean up water as soon as possible.

Sweep regularly to remove surface grit and dust. Use a damp cloth or mop to clean up any dirt and footprints.

CAUTION: Tiles are slippery when wet.

Never use wax, polish, abrasive cleaners or scouring agents as they may dull or distort the finish.

High heels can damage floors.

Do not allow pets with unclipped nails to scratch or damage the floor.

Use felt pads under heavy furniture, chairs and tables.

Use doormats at entrance ways to protect the floor from discoloring.

It's a good idea to save a few tiles in case of accidental damage.

If other trades are in the work area, a floor protector is highly recommended to help protect the finish of the floor.

WARRANTY

This guarantee is for replacement or refund of the vinyl tile flooring only, not labor (including the cost of labor for installation of the replacement floor) or costs incurred with loss of time, incidental expenses or any other damage. It does not cover damage from improper installation or maintenance (including side or end gapping), burns, tears, indentations, stains or reduction in gloss level due to normal use and/or exterior applications. Gapping, shrinkage, squeaks, fading or structural sub floor related issues are not covered under this warranty.

Lifetime Residential Warranty

This quality vinyl tile is guaranteed not to wear through or stain for the duration of your life in your home. From the date of purchase, your floor will be free from manufacturing defects and will not wear through or permanently stain from common household stains when installed and maintained according to instructions supplied with each carton. *Lifetime means 35 years.

20 Year Commercial Warranty

Our 20 Year Limited Commercial Warranty for vinyl tile means that for 20 years, from the date of purchase, your floor will be free from manufacturing defects and will not wear through when installed and maintained according to instructions supplied with each carton. Improper installation or workmanship should be directed to the contractor who installed the floor.

Claims

This guarantee applies only to the original purchaser and proof of purchase is required for all claims. Claims for wear must show a minimum dime size area. This guarantee is pro-rated based on the amount of time the floor has been installed. If you wish to file a claim under warranty, contact the authorized dealer where the flooring was purchased.