



For the most up-to-date product information, scan the QR code.

2" x 18" Floor/ Wall Tile in White | Beige



2" x 18" Field Tile in Aquamarine



2" x 18" Field Tile in Blue



2" x 18" Field Tile in Sky



2" x 18" Field Tile in White and Beige



2"x 18" Field Tile in Ivory



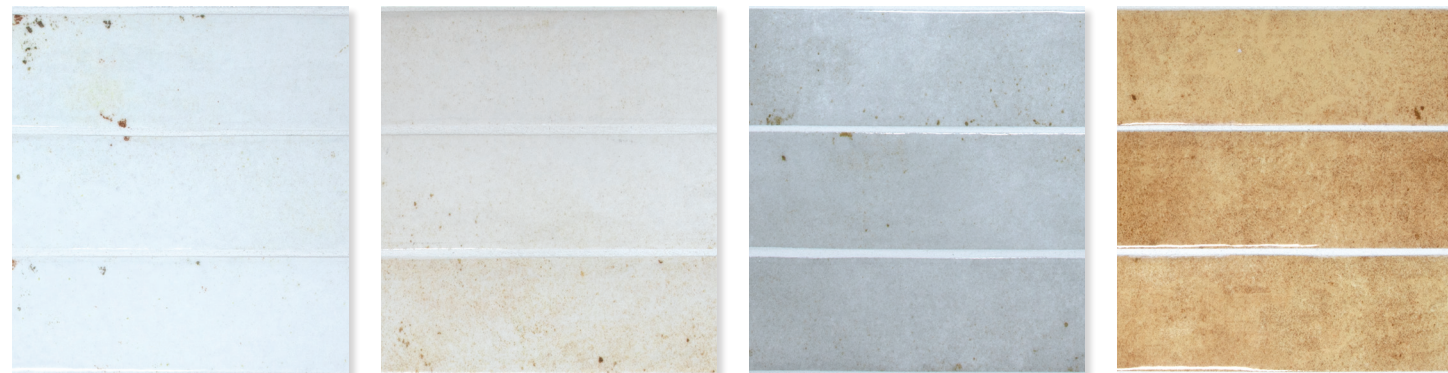
2"x 18" Field Tile in Light Grey

## AVAILABLE STOCKED ITEMS:

9.5mm Field Tiles - Pressed Edge			
SIZE	FINISH	COLORS	
2"x 18"	Polished	White   Ivory   Light Grey   Beige Acquamarine   Sky   Blue	
	Matte	White   Ivory   Light Grey   Beige   Sky   Blue	
Trim Pieces - Pressed Edge			
SIZE	TYPE	FINISH	COLORS
0.2"x18"	Finishing Strip	Polished	White   Ivory   Light Grey   Beige Acquamarine   Sky   Blue
	Finishing Strip	Matte	White   Ivory   Light Grey   Beige   Sky   Blue

All Sizes are Nominal.

## COLORS:

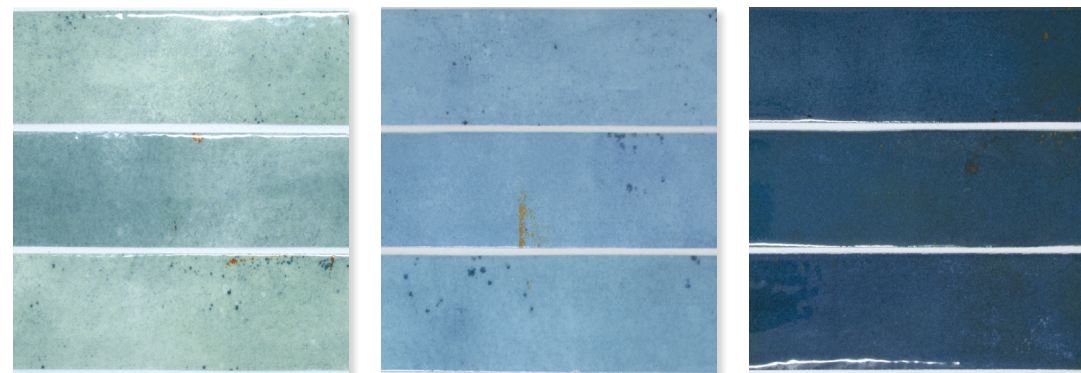


White

Ivory

Light Grey

Beige



Acquamarine

Sky

Blue

Colors shown may vary from actual product. Final selection should be made from actual product samples. Products and availability are subject to change, please refer to our website for the most up to date selection.

V2



**ZANZIBAR**  
Glazed Porcelain Tile

Features	Test Method	Value
Length and Width	ISO 10545 - 2	± 0.3% ± 1.0mm
Thickness		± 5% ± 0.5mm
Straightness of Sides		± 0.3% ± 0.8mm
Rectangularity		± 0.3% ± 1.5mm
Flatness		± 0.4% ± 1.8mm
Surface Quality		Min. 95% of tiles free of visible defects
Water Absorption	ISO 10545 - 3	< 0.2%
Modulus of Rupture	ISO 10545 - 4	> 45 N/mm <sup>2</sup>
Breaking Strength		≥ 700 N
Coefficient of Linear Thermal Expansion	ISO 10545 - 8	$a \leq 7 \times 10^{-6} C^{-1}$
Thermal Shock Resistance	ISO 10545 - 9	Resistant
Crazing Resistance	ISO 10545 - 11	Resistant
Chemical Resistance (Domestic)	ISO 10545 - 13	A
Chemical Resistance (Low Concentration)		HA
Chemical Resistance (High Concentration)		LA
Reaction to Fire	UNI EN 13501	A1 <sub>FL</sub>
Slip Resistance (Wet)	ANSI A326.3	<b>Matte</b>
		DCOF 0.62
		<b>Polished</b>
		<b>Does Not Pass</b>
LEED	-	Yes
Recycled Content	-	≥ 30%
Environmental Product Declaration	-	Yes
VOC Emissions	-	Zero VOC
Material Health Certification	-	Red List Free, Certificate Available



This product will contribute to USGBC registered LEED projects. It will also contribute to the ANSI approved NAHB Green Building Standard ICC 700.

According to ANSI and MIA standards, depending on the type and size of tile, it is recommended to have at least a 1/8" wide grout joint for floor tile in order to be able to fill the grout joint full and never less than 1/16" wide. Please refer to TCNA guidelines for more on grout recommendations.

**Disclaimer:** DCOF wet and dry is different on every production lot and can vary. This number represents the average DCOF of the tested production lots. If the spec listed is over the minimum standard, it will meet the requirement.

### Product Info:

- Glazed Porcelain Tile
- Polished | Matte Finishes
- 9.5mm Thickness
- Pressed Edge
- PEI = 3 - Blue
- 4 - Beige | Acquamarine | Sky
- 5 - White | Light Grey | Ivory
- V2 - Slight Shading Variation
- Frost Resistance = Yes



[www.genrose.com](http://www.genrose.com)

Contact your sales representative for more information. All material must be inspected prior to installation. Absolutely no claims will be accepted after installation.



[www.genrose.com](http://www.genrose.com)