

VIVID





6"x16" Wall Tile in Teal



6"x16" Wall Tile in White | Red | Orange | Lime



6"x16" Wall Tile in Clay | Orange | Red | Lime |
Teal | Purple | Blue | Dark Grey | Black

AVAILABLE SPECIAL ORDER ITEMS:

10mm Wall Tiles		
SIZE	FINISH	COLORS
6"x16"	Gloss	White Clay Orange Red Lime Teal Purple Blue Dark Grey Black

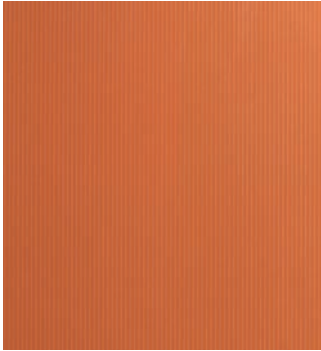
All Sizes are Nominal.



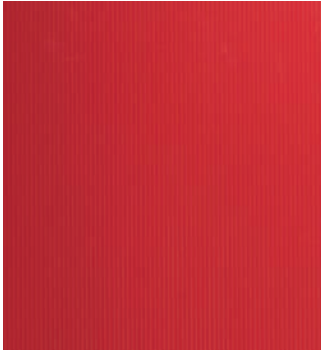
White



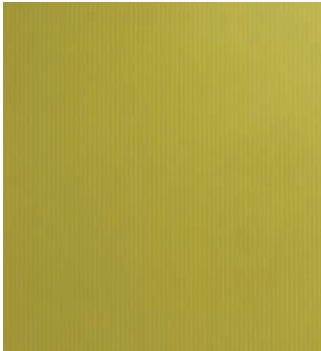
Clay



Orange



Red



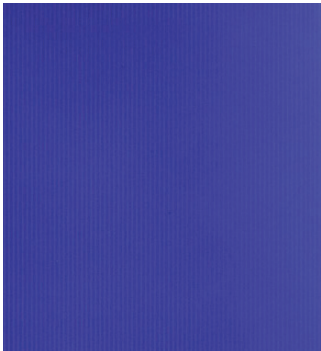
Lime



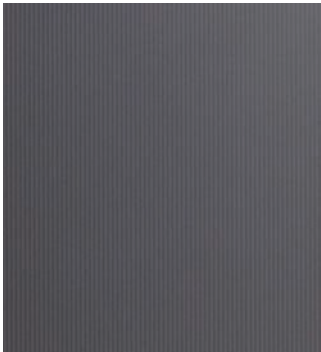
Teal



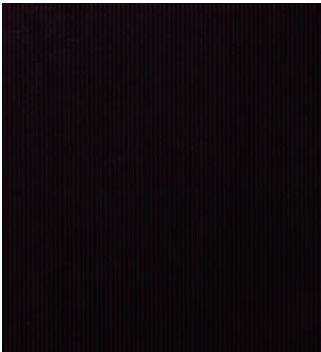
Purple



Blue



Dark Grey



Black

Colors shown may vary from actual product. Final selection should be made from actual product samples. Products and availability are subject to change, please refer to our website for the most up to date selection.

V1



GENROSE

VIVID
Ceramic Tile

Features	Test Method	Value
Length / Width	EN ISO 10545 - 2	$\pm \leq 0.25\%$
Thickness		$\pm 2.5\%$
Straightness of Side		$\pm 0.15\%$
Rectangularity		$\pm 0.4\%$
Surface Flatness		$\pm 0.3\%$
Water Absorption	EN ISO 10545 - 3	15% to 17%
Weight / M²	-	10mm Thick 16.67 kg
Modulus of Rupture	EN ISO 10545 - 4	$\geq 25\text{N} / \text{mm}^2$
Thermal Shock	EN ISO 10545 - 9	Pass
Frost Resistance	EN ISO 10545 - 12	Not Suitable
Chemical Resistance	EN ISO 10545 - 13	Class A - B
Stain Resistance	EN ISO 10545 - 14	Class 3
Fire Rating	-	Class A 1 Non Combustible
Recycled Content	-	up to 20%

According to ANSI and MIA standards, depending on the type and size of tile, it is recommended to have at least a 1/8" wide grout joint for floor tiles in order to be able to fill the grout joint full and never less than 1/16" wide. Please refer to TCNA guidelines for more on grout recommendations.



Product Info:

- Ceramic Tile
- Gloss Finish
- 10mm Thickness
- V1 - Uniform Appearance
- Frost Resistance = No



www.genrose.com

Contact your sales representative for more information. All material must be inspected prior to installation. Absolutely no claims will be accepted after installation.



www.genrose.com