

SHOCHU

 GENROSE



For more product information, scan the QR code.





4.5" x 9" Wall Deco in Midnight



4.5" x 9" Wall Deco in Chalky



4.5" x 9" Wall Deco in Chalky
4.5" x 9" Wall Deco in Wear



4.5" x 9" Wall Deco in Chalky
4.5" x 9" Wall Deco in Rusty Red

AVAILABLE STOCKED ITEMS:

8.5mm Wall Deco		
SIZE	FINISH	COLORS
4.5" x 9"	Glossy	Polar White Chalky Rusty Red Wear Midnight Charcoal Grey

This product is made up of 8 different faces that are randomly mixed in the box. All sizes are nominal.



Polar White



Chalky



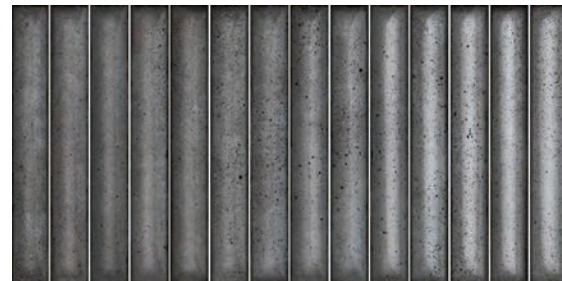
Rusty Red



Wear



Midnight



Charcoal Grey



Grout Between Tile



Grout Between Finger Grooves

Colors shown may vary from actual product. Final selection should be made from actual product samples. Products and availability are subject to change, please refer to our website for the most up to date selection.

Features	Test Method	Value
Thickness	UNE EN ISO 10545-2	± 0.5mm
Orthogonality		± 0.75mm
Surface Flatness		± 0.75mm
Surface Quality		≥ 95%
Water Absorption	UNE EN ISO 10545-3	0.5% < E ≤ 3%
Breaking Strength	UNE EN ISO 10545-4	>700 N
Flexure Resistance	UNE EN ISO 10545-4:9	>30 N/MM ²
Abrasion Resistance	UNE EN ISO 10545-7	N/A
Crazing Resistance	UNE EN ISO 10545-11	Resistant
Frost Resistance	UNE EN ISO 10545-12	Resistant
Mohs Hardness	UNE EN 67-101	N/A
Stain Resistance	UNE EN ISO 10545-14	4
Recycled Material	-	11.4%

According to ANSI and MIA standards, depending on the type and size of tile, it is recommended to have at least a 1/8" wide grout joint for floor tiles in order to be able to fill the grout joint full and never less than 1/16" wide. Please refer to TCNA guidelines for more on grout recommendations.

Shochu is designed with a narrow "grout effect" between the dimensional fingers on the face of the tile. The wall tiles can be grouted between each tile or between each tile and across the faces of the finger tiles. Unsanded grout is recommended.

EXPERT TIP: When adding grout to the face of each tile, the depth of grout between the finger grooves will change the effect produced. A shallow fill will reveal more of the contours of the grooves on the tile and will produce a thinner grout line. It is recommended that the size of the grout joint created within the finger grooves matches the size of the grout joint around the perimeter of the tiles. In addition, the grout between each finger groove must be cleaned uniformly throughout the installation in order to maintain a consistent look.

Product Info:

- Porcelain Tile
- Glossy Finish
- 8.5mm Thickness
- Pressed Edge
- Frost Resistance = Yes
- V3 - Moderate Variation

Indoor/Outdoor Walls

Application: Suitable for Wet Walls



www.genrose.com



www.genrose.com