

# RADIANCE



For more product information, scan the QR code.







3"x 9" Wall Tile in Patagonia

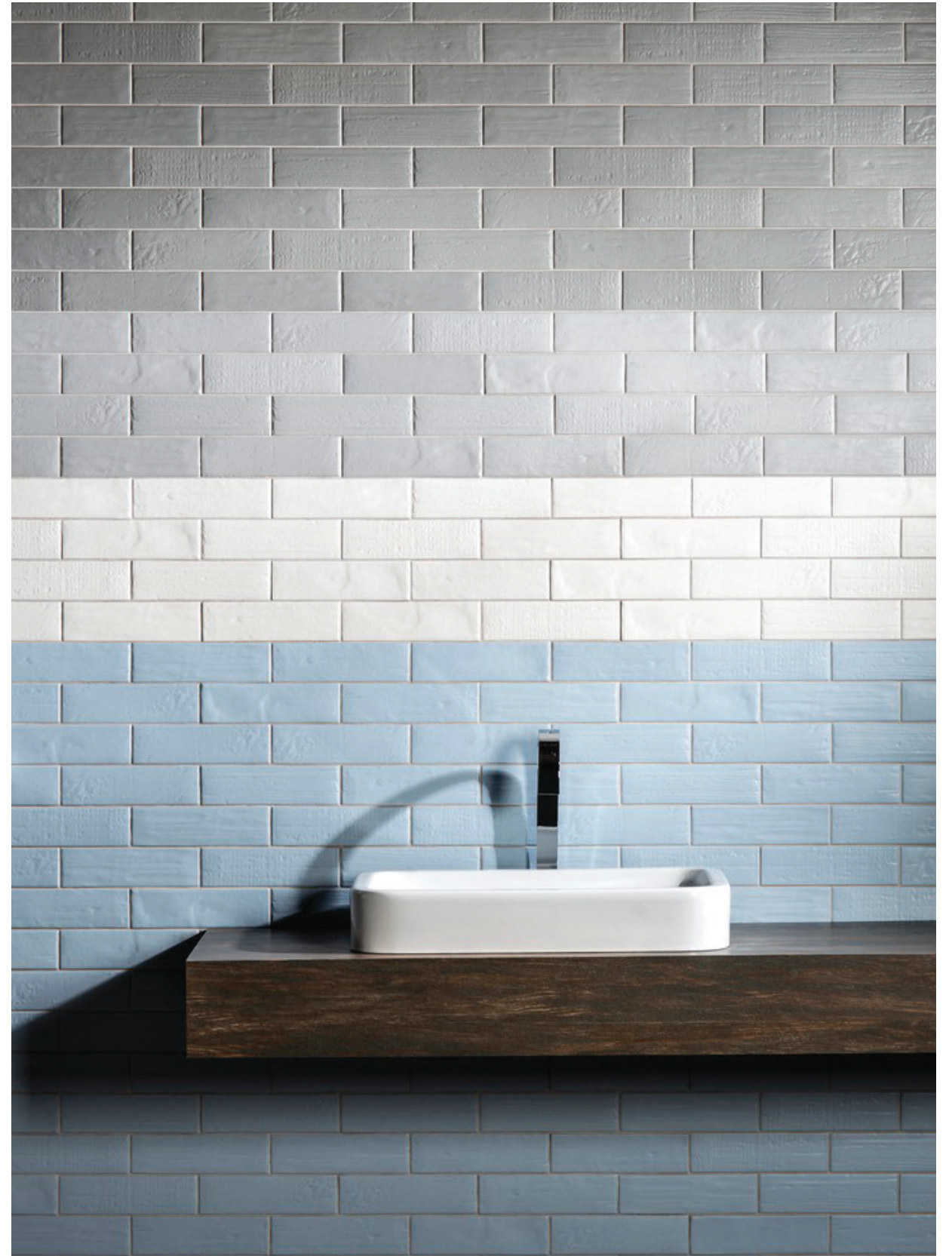


3"x 9" Wall Tile in Cosmos | Flamingo





3"x 9" Wall Tile in Patagonia



3"x 9" Wall Tile in Patagonia | Wonderland | Iceland | Siberian





3" x 9" Wall Tile in Savannah | Amsterdam





3"x 9" Wall Tile in Lhama | Auckland | Golden Coast | Cacao



3"x 9" Wall Tile in Blush



# AVAILABLE STOCKED ITEMS:

7.2mm Wall Tiles		
SIZE	FINISH	COLORS
3"x 9"	Matte	ALL

All sizes are Nominal.



Santorini



Lhama



Capadocia



Savannah



Apache



Tobacco



Cacao



Patagonia



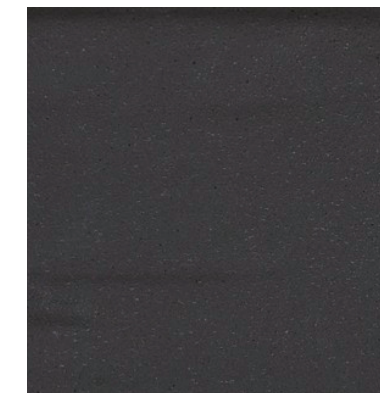
Siberian



Iceland



Industrial Garage



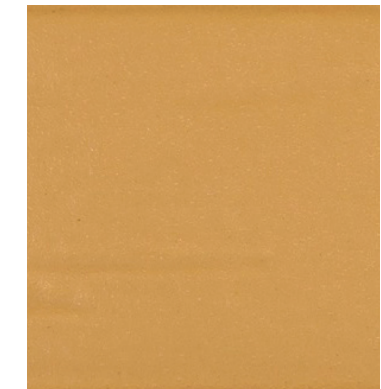
Cosmos



Lima da Persia



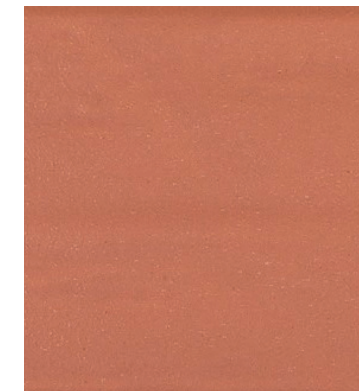
Golden Coast



Dijon



Amsterdam



Havana



Toscana



Alice



Blush



Flamingo

Colors shown may vary from actual product. Final selection should be made from actual product samples. Products and availability are subject to change, please refer to our website for the most up to date selection.

Colors shown may vary from actual product. Final selection should be made from actual product samples. Products and availability are subject to change, please refer to our website for the most up to date selection.





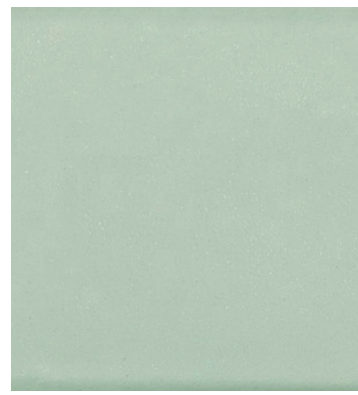
**Chili**



**Ginja**



**Rosa Cha**



**Aquamarine**



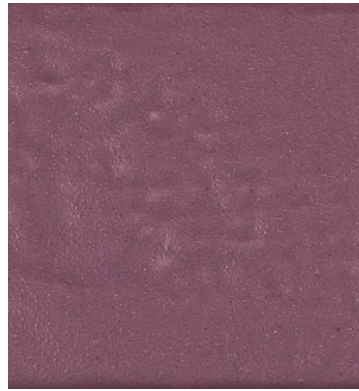
**Macaron**



**Mandacaru**



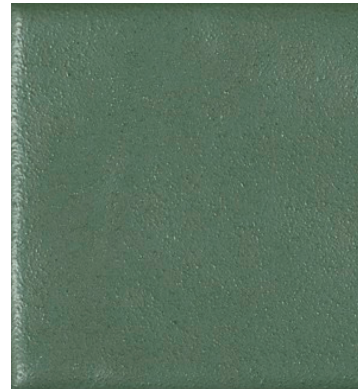
**Borgogna**



**Mirtilo**



**Aubergine**



**Highland**



**Army**



**Monaco**



**Auckland**



**Diesel**



**Wonderland**



**Serena**



**Noturno**

Colors shown may vary from actual product. Final selection should be made from actual product samples. Products and availability are subject to change, please refer to our website for the most up to date selection.

Colors shown may vary from actual product. Final selection should be made from actual product samples. Products and availability are subject to change, please refer to our website for the most up to date selection.





Features	Test Method	Value
Water Absorption	C373	≤ 3%
Warpage	C485	± 0.4%
Wedging	C502	± 0.25%
Breaking Strength	C648	Complies with 125 lbf or greater
Mohs Hardness	C1895	5
Chemical Resistance	C650	Class A
Stain Resistance	C1378	Class A
Low Emissions Material · Zero VOC		

According to ANSI and MIA standards, depending on the type and size of tile, it is recommended to have at least a 1/8" wide grout joint for floor tiles in order to be able to fill the grout joint full and never less than 1/16" wide. Please refer to TCNA guidelines for more on grout recommendations.

**Product Info:**

- Ceramic Wall Tile
- Matte Finish
- 7.2mm Thickness
- Pressed Edge
- V1 - Uniform Appearance
- Frost Resistance = No





