

MUUTOS





2.5"x16" Field Tile in Antracite



2.5"x16" Field Tile in Gesso | Avorio



2.5"x16" Field Tile in Verde Chiaro | Verde Scuro | Avorio



2.5"x16" Field Tile in Rovere



2.5"x16" Field Tile in Gesso | Rovere | Nocciola



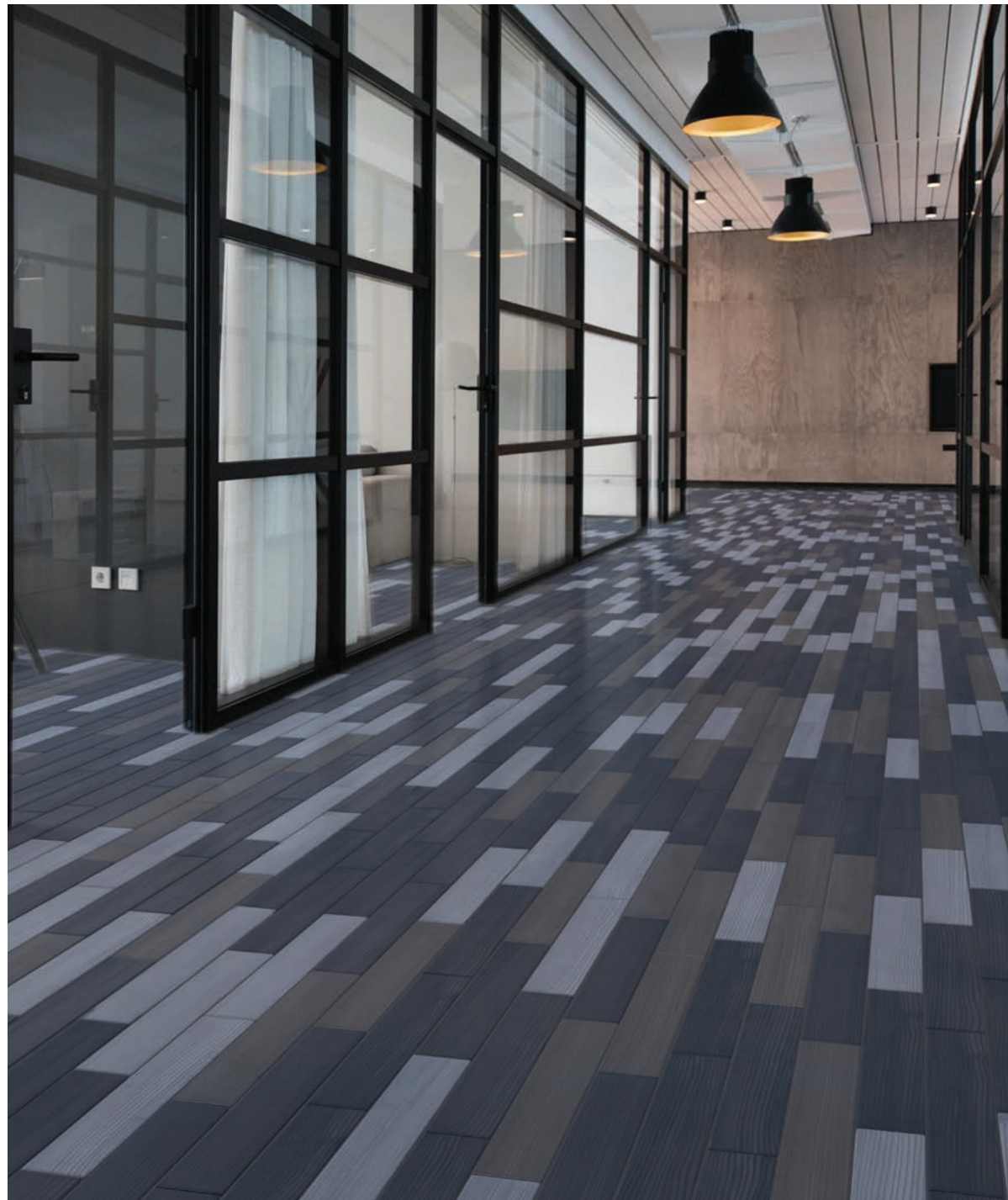
2.5"x16" Field Tile in Gesso

AVAILABLE IN:

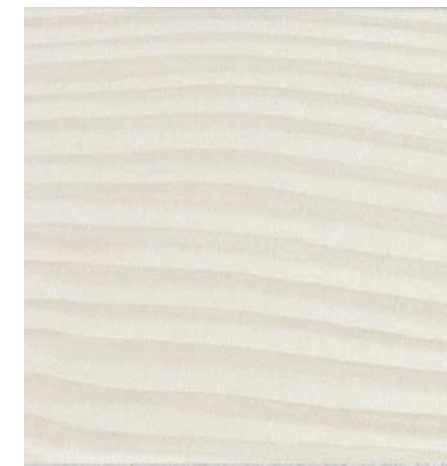
9mm Field Tile
Pressed Edge

2.5"x16" *Matte Finish*

- All sizes are NOMINAL



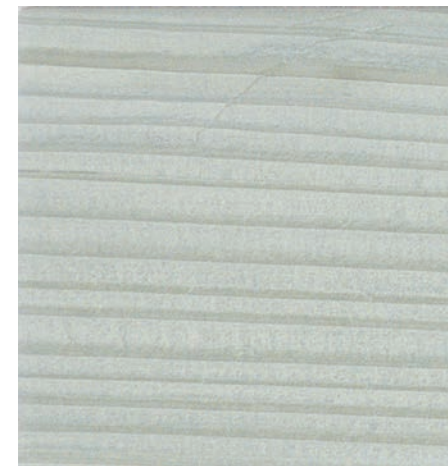
Gesso



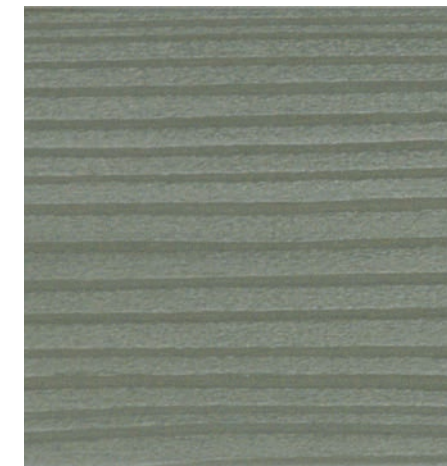
Avorio



Rovere



Verde Chiaro



Verde Scuro



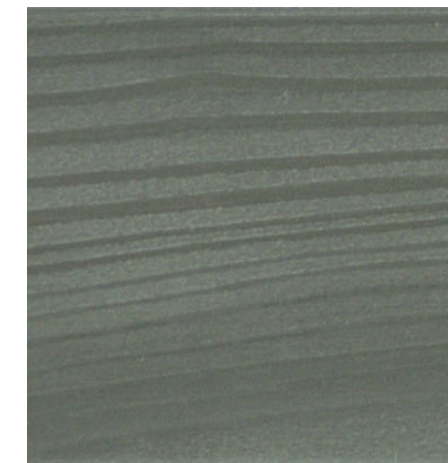
Nocciola



Azzurro



Blu



Antracite

2.5"x16" Field Tile in Azzurro | Blu | Antracite

Colors shown may vary from actual product. Final selection should be made from actual product samples.



Features	Test Method	Value
Length and Width	ISO 10545-2	± 0.6% ± 2.0mm
Thickness		± 5% ± 0.5 mm
Straightness of Sides		± 0.5% ± 1.5 mm
Rectangularity		± 0.5% ± 2.0 mm
Surface Flatness		± 0.5% ± 2.0 mm
Water Absorption	ISO 10545-3	< 0.5%
Breaking of Rupture	ISO 10545-4	> 1300 N
Modulus of Rupture		> 35 N/mm ²
Surface Abrasion Resistance	ISO 10545-7	4
Scratch Hardness	EN 101	7
Coefficient of Linear Thermal Expansion	ISO 10545-8	6.5 x 10 ⁻⁶ °C
Thermal Shock Resistance	ISO 10545-9	Guaranteed
Crazing Resistance	ISO 10545-11	Guaranteed
Frost Resistance	ISO 10545-12	Guaranteed
Chemical Resistance to Low Concentrations of Acids and Alkalis	ISO 10545-13	GLA
Chemical Resistance to High Concentrations of Acids and Alkalis		GHA
Chemical Resistance to Household Chemicals		GA
DCOF (WET)	ASTM BOT3000	≥ 0.42
Stain Resistance	ISO 10545-14	5
Recycled Content	-	Min. 24%

According to ANSI and MIA standards, depending on the type and size of tile, it is recommended to have at least a 1/8" wide grout joint for floor tiles in order to be able to fill the grout joint full and never less than 1/16" wide. Please refer to TCNA guidelines for more on grout recommendations.

Product Info:

- Glazed Porcelain Tile
- Matte Finish
- 9mm Thickness
- Pressed Edge
- PEI Rating = 4
- V2 - Slight Shading Variation
- Frost Resistance = Yes





www.genrose.com