

ESTRELLA



For the most up-to-date product information, scan the QR code.

2.5" x 12" Floor/Wall Tile in Silverstone
2" x 6" Floor/Wall Tile in Burnt Umber



6.5" Star Floor/ Wall Tile in Dusty Rose
5" Cross Floor/ Wall Tile in Almond Mist
2" x 6" Floor/ Wall Tile in Midnight Slate



2.5" x 12" Floor/ Wall Tile in Silverstone
2" x 6" Floor/Wall Tile in Burnt Umber



6.5" Star Floor/Wall Tile in Frosted Linen
5" Cross Floor/Wall Tile in Golden Sky
6" x 6" Floor/Wall Tile in Sahara Sand
2" x 6" Floor/Wall Tile in Saltwater



6" x 6" Floor/ Wall Tile in Dusty Rose
2.5" x 12" Floor/Wall Tile in Burnt Umber



6" x 6" Floor/ Wall Tile in Frosted Linen
6" x 6" Floor/ Wall Tile in Midnight Slate

AVAILABLE STOCKED ITEMS:

| 8mm Floor/Wall Tiles - Pressed Edge | | |
|-------------------------------------|--------|--|
| SIZE | FINISH | COLORS |
| 2.5" x 12" | Matte | Almond Mist Burnt Umber Dusty Rose Frosted Linen Golden Sky Midnight Slate Sahara Sand Saltwater Silverstone Soft Sage |
| 6.5" Star | | |
| 5" Cross | | |

SPECIAL ORDER ITEMS:

| 8mm Floor/Wall Tiles - Pressed Edge | | |
|-------------------------------------|--------|--|
| SIZE | FINISH | COLORS |
| 2" x 6" | Matte | Almond Mist Burnt Umber Dusty Rose Frosted Linen Golden Sky Midnight Slate Sahara Sand Saltwater Silverstone Soft Sage |
| 6" x 6" | | |

All Sizes are Nominal.



6.5" Star Floor/ Wall Tile in Dusty Rose
5" Cross Floor/Wall Tile in Burnt Umber

COLORS:

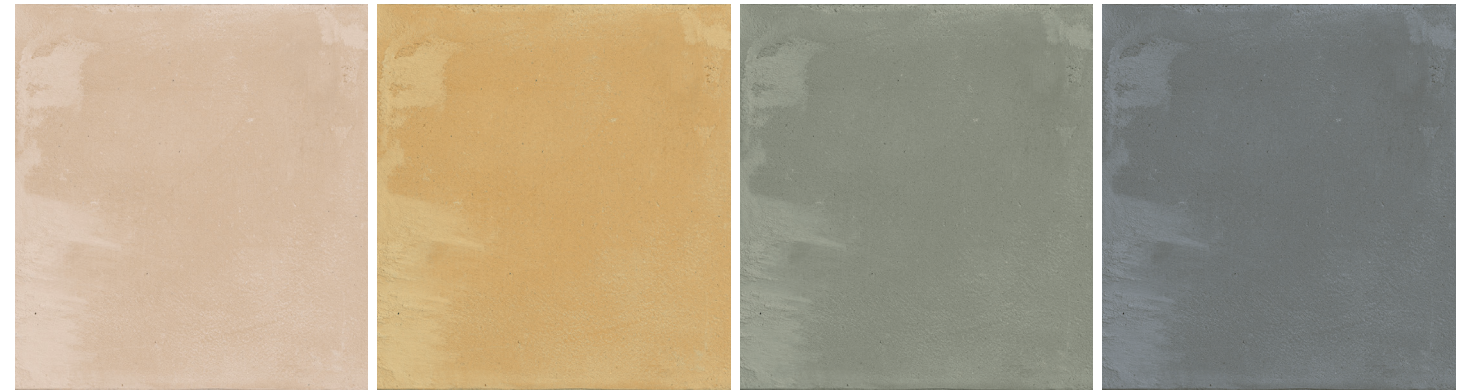


Frosted Linen

Almond Mist

Silverstone

Sahara Sand

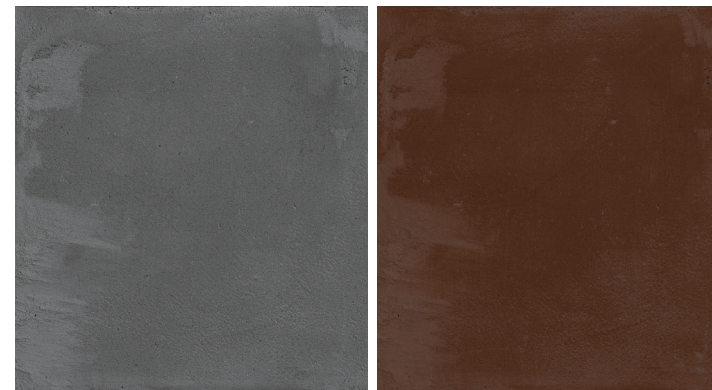


Dusty Rose

Golden Sky

Soft Sage

Saltwater



Midnight Slate

Burnt Umber

Colors shown may vary from actual product. Final selection should be made from actual product samples. Products and availability are subject to change, please refer to our website for the most up to date selection.



6.5" Star Floor/ Wall Tile in Soft Sage
5" Cross Floor/Wall Tile in Soft Sage

| Features | Test Method | Value |
|--------------------------|-------------|---|
| Thickness | ASTM C499 | ± 0.03" |
| Surface Quality | | Min. 95% of surface free of visible defects |
| Warpage | ASTM C485 | Compliant |
| Wedging | ASTM C502 | Compliant |
| Water Absorption | ASTM C373 | ≤ 0.5% |
| Breaking Strength | ASTM C648 | ≥ 350 lbf |
| Thermal Shock Resistance | ASTM C484 | Resistant |
| Crazing Resistance | ASTM C424 | Resistant |
| Fire Resistance | - | A1/A1fl |
| Slip Resistance (Wet) | ANSI A326.3 | DCOF 0.71 |
| VOC Emissions | - | Zero VOC |
| LEED | - | Yes |
| Recycled Content | - | 40% |
| Greenguard Gold | - | Yes |
| Declare | - | Red List Free |



This product will contribute to USGBC registered LEED projects. It will also contribute to the ANSI approved NAHB Green Building Standard ICC 700.

According to ANSI and MIA standards, depending on the type and size of tile, it is recommended to have at least a 1/8" wide grout joint for floor tiles in order to be able to fill the grout joint full and never less than 1/16" wide. Please refer to TCNA guidelines for more on grout recommendations.

Applications: Residential and Light Commercial

Product Info:

- Glazed Porcelain Tile
- Matte Finish
- 8mm Thickness
- Pressed Edge
- V3 - Moderate Variation
- Frost Resistant





www.genrose.com