

CHELSEA

GENROSE





2.5"x10.5" Tile in White
2.5"x10.5" Tile in Sage



2.5"x10.5" Tile in White
2.5"x10.5" Tile in Black

AVAILABLE IN:

Ceramic Tile*

2.5"x10.5" *Matte Finish*

- All sizes are nominal
*Residential Floor Indoor Only
** Indoor Only (Due to absorption)

Porcelain Tile**

6"x6.8" *Hexagon Matte Finish*



6"x6.8" Hexagon Tile in White
6"x6.8" Hexagon Tile in Black



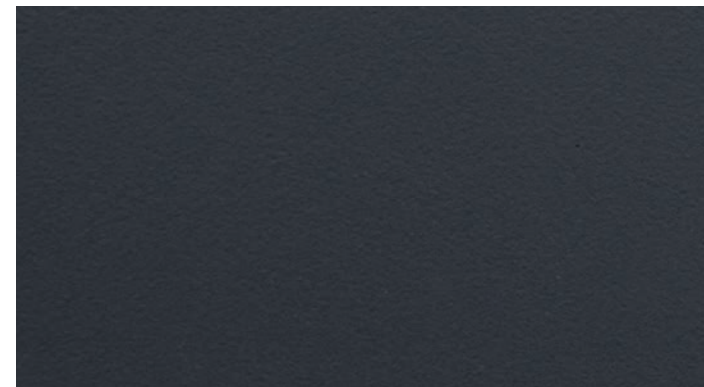
White



Greige



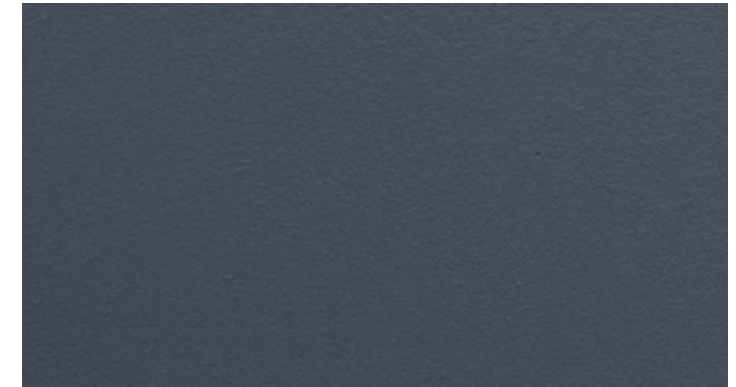
Gray



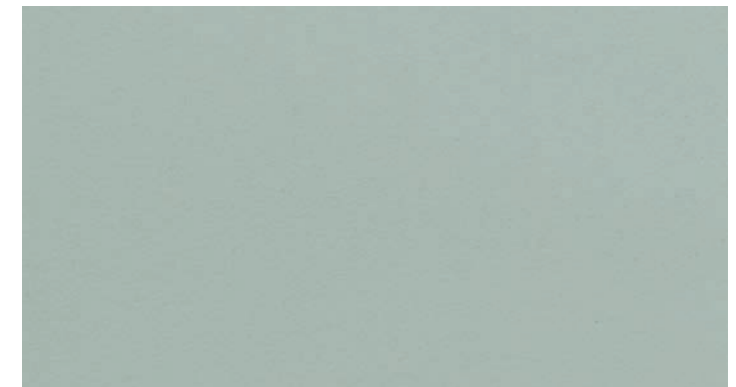
Black



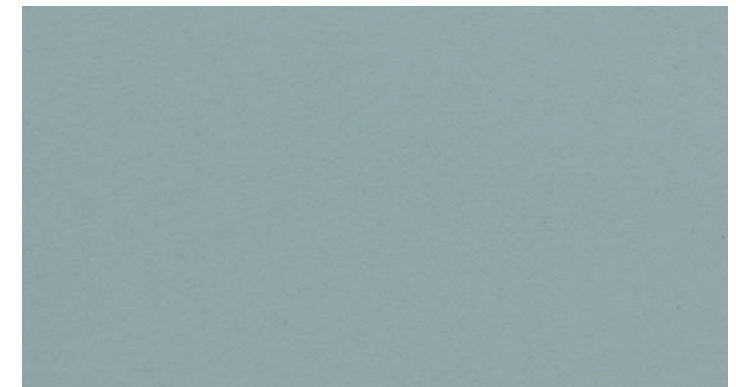
Bone



Indigo



Sage



Turquoise

Colors shown may vary from actual product. Final selection should be made from actual product samples.



Features	Test Method	Value
Water Absorption	ISO 10545-3	> 0.5% <10%
Abrasion Resistance	ISO 10545-7	4 (Other Colors) 3 (Black Indigo)
Crazing Resistance	ISO 10545-11	Resistant
Chemical Resistance	ISO 10545-13	GHB
Stain Resistance	ISO 10545-14	4
Slip Resistance	DIN 51130: 2014-02	R10

According to ANSI and MIA standards, depending on the type and size of tile, it is recommended to have at least a 1/8" wide grout joint for floor tiles in order to be able to fill the grout joint full and never less than 1/16" wide. Please refer to TCNA guidelines for more on grout recommendations.

***Residential Floor Indoor Only**

****Indoor only** (due to the absorption)

Product Info:

- Ceramic | Glazed Porcelain Tile
- Matte Finish
- 8mm Thickness
- Pressed Edge
- PEI Rating = 4 (Other Colors)
3 (Black | Indigo)
- V1 - Uniform Variation
- Frost Resistance = No



6"x6.8" Hexagon Tile in White



www.genrose.com