

BRILLIANCE



For the most up-to-date product information, scan the QR code.

9.5" x 11" Hexagon in Nero



9.5" x 11" Hexagon | 4" x 16" Floor/Wall Tile in Blu



9.5" x 11" Hexagon in Perla | 4" x 16" Floor/Wall Tile in Verde

AVAILABLE STOCKED ITEMS:

10mm Floor/Wall Tile - *Pressed Edge*

SIZE	FINISH	COLORS
4" x 16"	Semi Polished	Bianco Verde Blu Sabbia Perla Nero
9.5" x 11" Hexagon	Semi Polished	Bianco Verde Blu Sabbia Perla Nero

All Sizes are Nominal.

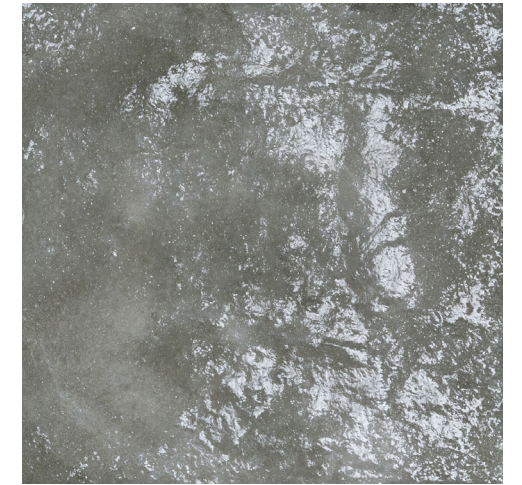


9.5" x 11" Hexagon in Perla | 4" x 16" Floor/Wall Tile in Bianco

COLORS:



Bianco



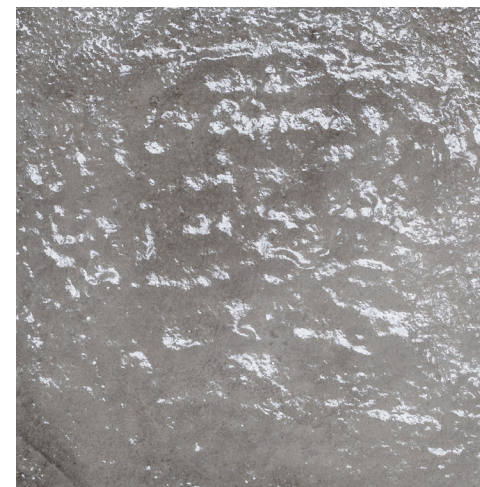
Verde



Blu



Sabbia



Perla



Nero

Colors shown may vary from actual product. Final selection should be made from actual product samples. Products and availability are subject to change, please refer to our website for the most up to date selection.

9.5" x 11" Hexagon:



9.5 " x 11" Hexagon | 4" x 16" Floor/Wall Tile in Sabbia
 9.5 " x 11" Hexagon | 4" x 16" Floor/Wall Tile in Verde



BRILLIANCE
 Glazed Porcelain Tile

Features	Test Method	Value
Length and Width	ISO 10545 - 2	± 0.5%, ± 2mm
Thickness		± 5%, ± 0.5mm
Straightness of Sides		± 0.5%, ± 1.5mm
Rectangularity		± 0.3%, ± 2mm
Surface Flatness		± 0.5%, ± 2mm
Surface Quality		Min. 95% of tiles free of visible defects
Water Absorption	ISO 10545 - 3	E ≤ 0.1% Bla GL
Modulus of Rupture / Breaking Strength	ISO 10545 - 4	R ≥ 35 N/mm ²
Bending Strength		S ≥ 1300 N
Coefficient of Linear Thermal Expansion	ISO 10545 - 8	Resistant
Thermal Shock Resistance	ISO 10545 - 9	Resistant
Crazing Resistance	ISO 10545 - 11	Resistant
Chemical Resistance (Domesitic)	ISO 10545 - 13	A
Chemical Resistance (Low Concentration)		LA
Chemical Resistance (High Concentration)		HA
Fire Resistance	-	A1/A1 _{FL}
Slip Resistance	-	DCOF Does Not Pass
LEED		Yes
Recycled Content		5.22%
VOC Emissions		Zero VOC
Environmental Product Declaration	-	Facility-Specific



This product will contribute to USGBC registered LEED projects.
 It will also contribute to the ANSI approved NAHB Green Building Standard ICC 700.

According to ANSI and MIA standards, depending on the type and size of tile, it is recommended to have at least a 1/8" wide grout joint for floor tiles in order to be able to fill the grout joint full and never less than 1/16" wide. Please refer to TCNA guidelines for more on grout recommendations.

Disclaimer: DCOF wet and dry is different on every production lot and can vary. This number represents the average DCOF of the tested production lots. If the spec listed is over the minimum standard, it will meet the requirement.

Product Info:

- Glazed Porcelain Tile
- Semi Polished Finish
- 10mm Thickness
- Pressed Edge
- PEI Rating = 3 - 4
- V3 - Moderate Variation
- Frost Resistance = Yes



www.genrose.com

Contact your sales representative for more information. All material must be inspected prior to installation. Absolutely no claims will be accepted after installation.



www.genrose.com